

# Our objectives

1. We aim for a careers education system that has a measurable **impact** on young people - now and in the future
2. We aim to **include** all young people in careers education removing barriers where we can
3. We build **leaders** and institutions who can sustain the mission in the long term

# Co-ordinated actions: our priority areas of work



# Coordinated Actions

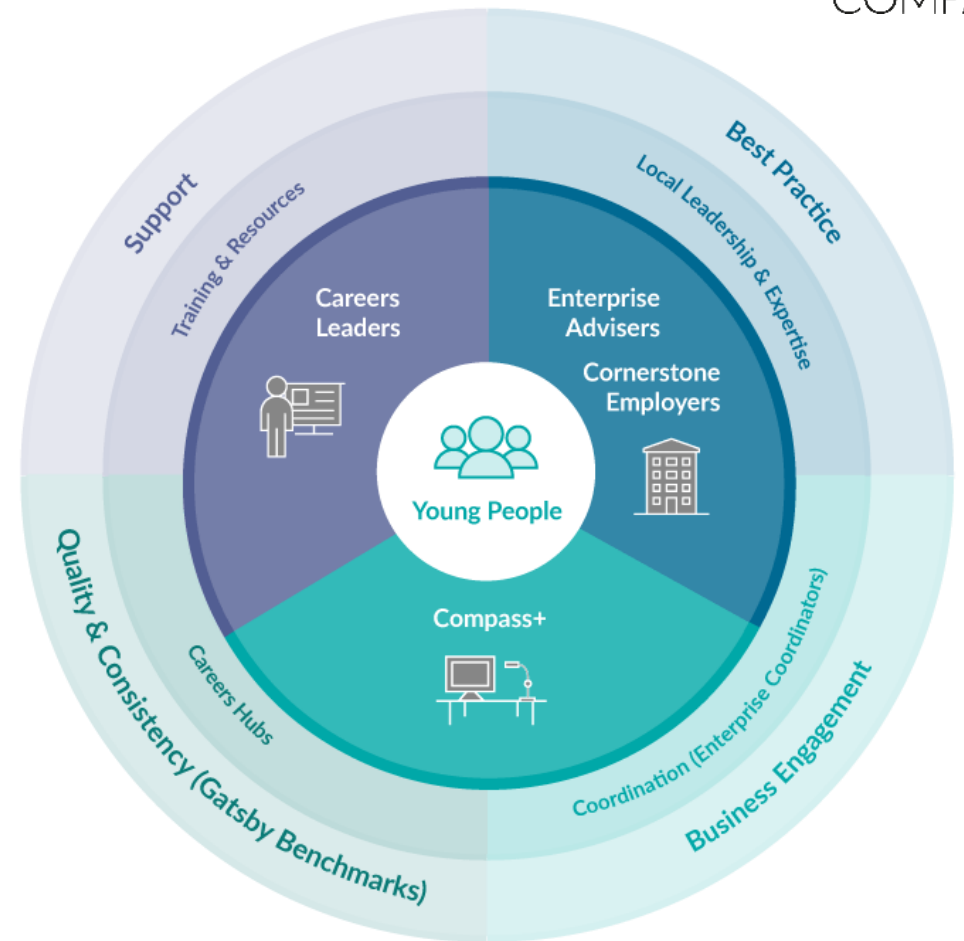
We aim to:	
Impact	1.1 Amplify technical and vocational routes
	1.2 Secure an improving system through review and support
	1.3 Put young people at the heart of our work, including through large scale collection of pupil feedback
Inclusion	2.1 Support young people most at risk through transitions
	2.2 Remove barriers for disadvantaged young people, in partnership with employers
	2.3 Provide careers support and training to the education workforce
Leadership	3.1 Support leaders across the system through training and development
	3.2 Make sure careers education is part of local economic strategies
	3.3 Help employers deliver high quality outreach work, including through 'employer standards'

# Our model



## Our model

1. A **powerful Careers Leader** in every school and college that can meet individual needs.
2. A school or college where there is **strategic engagement with business** (through Enterprise Advisers and Cornerstone Employers).
3. A **local area where activity is co-ordinated to share expertise** (facilitated by Careers Hubs).
4. A national body to secure **higher standards, consistency and promote what works**.



The Careers & Enterprise Company's Model